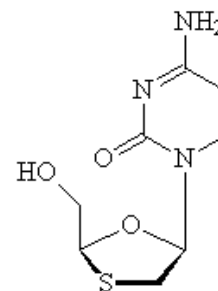


# LAMIVUDINE

## Globe Specification



**Globe Reference:**  
**CIPA 5010146**

<b>Formula</b>	C <sub>8</sub> H <sub>11</sub> N <sub>3</sub> - O <sub>3</sub> S Mr= 229,26
<b>Action and use</b>	Anti – retroviral
<b>Characteristics</b>	White opaque crystalline powder, free of strange particles
<b>Solubility</b>	Conform
<b>IDENTIFICATION</b>	
. Infrared spectrum	Conform
. Liquid chromatographic	Conform
. Ultraviolet spectrum	Conform
<b>ESSAYS</b>	
. Specific Rotation to 25°C	-125°C to -145°C
. Water content	Not more than 2.0 per cent
. Residue on ignition	Not more than 0.15 per cent
. Heavy metals	Not more than 0.001 per cent (10 ppm)
<b>Related Substances:</b>	
- Ordinary impurity	Not more than 0.5 per cent
- Impurity total	Not more than 1.0 per cent
<b>Particles size:</b>	
- 100 mesh	Mínimum 30 per cent retained
<b>ASSAY</b>	
. Lamivudine Content in g by 100 g of dried substance	99,0 to 101,0 per cent
<b>Storage</b>	In well-closed containers
<b>Packaging</b>	25 Kg fiber drum with double polyethylene bags



**GLOBE QUÍMICA**  
TECHNOLOGICAL EXPERTISE

SYSTEM OF MANAGEMENT QUALITY **ISO-9001/2000**  
CERTIFICATE COMPANY IN GOOD MANUFACTURING  
PRACTICES – **GMP**

### **GLOBE QUÍMICA S.A.**

Rod. SP 332 KM 138 - Portão A PARTE Cosmópolis - SP - BRAZIL  
Zip Code: 13150-000 Phone: 55 19 3872 87 00 Fax: 55 19 3872 87 01

PAGE: [www.globequimica.com.br](http://www.globequimica.com.br)

E.MAIL: [comercial@globequimica.com.br](mailto:comercial@globequimica.com.br)

**FINE CHEMICALS**